

You're receiving this email because of your relationship with Presbytery of Yukon. Please [confirm](#) your continued interest in receiving email from us.

You may [unsubscribe](#) if you no longer wish to receive our emails.



Presbytery of Yukon

616 W. 10th Avenue • Anchorage, AK 99501

907-276-0914
office@pbyukon.org

December 5, 2013

Table of Contents

Prayer list

Winter Youth Camp

PLUME Youth Event

Ecumenical Advocacy Days 2014

Mark Your Calendars

As The Body of Christ We Pray Together

If you are coming to Anchorage for hospital treatment and would like a pastoral visit, please contact the Presbytery office.

And our military chaplains:

- Rev. Ted McGovern
- Rev. Patrick Bracken
- Rev. Kevin Wainwright
- Rev. John Kaiser

Update on St. Lawrence Island Assistance

On Friday, November 22nd, the Savoonga Session and Deacons held a joint meeting regarding the economic disaster they are facing. They decided to organize so that the church will become the outlet for the Food Bank of Alaska in Savoonga. 19-year-old deacon, Tiffany Immingan will be the director.

This summer, adverse weather conditions made it nearly impossible for hunters to get walrus, the prime meat source for the island, and the prime cash source, as well (ivory artwork). As a result most residences are on food assistance, which does not last through the whole month--and it's another six months until walrus hunting begins again.

The Presbytery has applied for, and received, a Presbyterian Disaster Assistance (PDA) grant which will greatly assist in the effort. Individual donations can be sent to the Presbytery office at 616 W. 10th Avenue, Anchorage, AK 99501. Please make the checks payable to the Presbytery of Yukon and be sure they are designated "St. Lawrence Assistance". Thank you so much for your continued support and please keep the communities in your prayers.

Note to Churches:

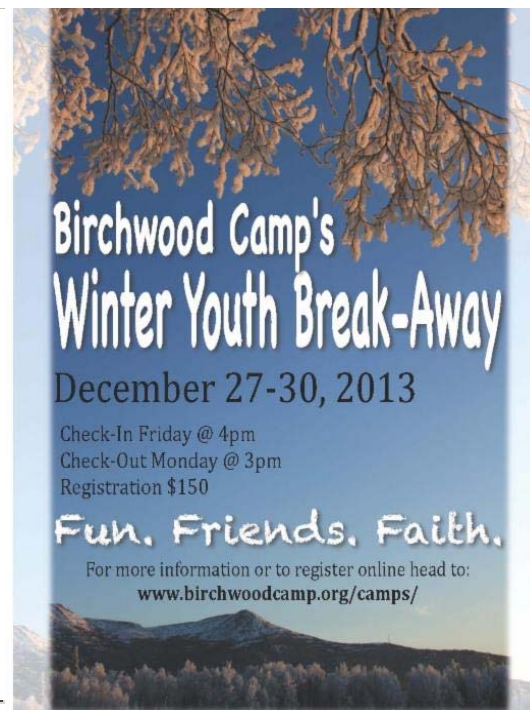
Our February Presbytery meeting is quickly approaching. Please remember to elect your Elder Commissioner as soon as possible. The sooner we know who is attending and can make travel arrangements to Anchorage, the better the airfare prices. Thank you!



Birchwood Camp is hosting their annual **Winter Youth Break-Away camp** on **December 27-30, 2013!**

This is a wonderful event for middle school and high school youth in grades 6-12. All YOUTH from the Alaska PLUME family (Presbyterian, ELCA Lutheran, United Methodist, Episcopal churches) are invited to attend! The retreat program is inclusive and ecumenical and will be a time for enjoying worship and fellowship together as well as exploring fun Winter activities indoors and outdoors.

For more information or to register online, visit:
<http://birchwoodcamp.org/camps/>.



"In the end, love
doesn't just keep
thinking about it
or planning for it.

Simply put:
Love does!"

Bob Goff

PLUME Youth Mission Immersion

All youth grades 7-12 are invited to a Youth Mission Immersion on January 17-19, 2014 in Anchorage. Hosted by PLUME (Presbyterian, Lutheran, United Methodist & Episcopal) churches, youth will spend a weekend serving others in Anchorage. Visit www.plumeyouthAK.com for info, schedule, to register and pay online. Cost is \$35 which includes lodging, food and a T-shirt!

For further information about the event, please contact Danna Larson at dannal Larson@firstpresanchorage.org.

Save the Date! Ecumenical Advocacy Days: March 21-24, 2014



You're invited to the 12th annual Ecumenical Advocacy Days, a four-day conference in Washington, D.C. that brings hundreds of participants from the Christian community together with policy experts, faith leaders, and advocacy specialists. Participants in the 2014 gathering, which will take place from March 21-24, will explore the theme of *Jesus Weeps: Resisting Violence, Building Peace*

through workshops, plenary sessions, issue analysis, advocacy training, and meetings with elected officials. Join us! Click [here](#) to learn more or register for the 2014 gathering.

Mark Your Calendars...

December 23rd-27th:

Presbytery office will be closed for the Christmas holiday

December 25th:

Christmas Day

December 27th-30th:

Birchwood Camp's Winter Youth Break-Away

For more information or to register online, click here.

January 17th - 19th:

PLUME Youth Mission Immersion

Anchorage

For more information, please visit: www.plumeyouthAK.com

February 28th - March 1st, 2014:

Next Presbytery Meeting - Anchorage area - Location to be determined

March 21st-24th, 2014:

Ecumenical Advocacy Days

Washington D.C.

Click here to visit the website for more information.

Quick Links

[Presbytery of Yukon](#) | [Synod of Alaska- Northwest](#) | [PC\(USA\)](#)
[Presbyterians for Earth Care](#) | [Presbyterian Foundation](#)



Try it FREE today.

This email was sent to office@pbyukon.org by office@pbyukon.org |
[Update Profile/Email Address](#) | Instant removal with [SafeUnsubscribe™](#) | [Privacy Policy](#).

Presbytery of Yukon | 616 W. 10th Avenue | Anchorage | AK | 99501