



Presbytery of Yukon

616 W. 10th Avenue • Anchorage, AK 99501

907-276-0914
office@pbyukon.org

December 17, 2013

As The Body of Christ We Pray Together

If you are coming to Anchorage for hospital treatment and would like a pastoral visit, please contact the Presbytery office.

- The family of LeeAnn Crumbly in her passing

And our military chaplains:

- Rev. Ted McGovern
- Rev. Patrick Bracken
- Rev. Kevin Wainwright
- Rev. John Kaiser



A Message From Curt

Dear Friends,

Sandy Brown, a colleague from San Joaquin Presbytery, recently reminded some of us that Jesus came to show us the way into the world, not the way out of the world. Indeed, as we celebrate the birth of Jesus next week, we will be celebrating that in Jesus God came into our world, joining with all creation by joining with the human part of creation. Sandy pointed out that God came as a missionary, and God's mission is to redeem all of creation, including each of us.

As you are making preparations to celebrate Christmas with your family, faith community and friends, I hope that you will also take time to look around at these people and this creation, which Jesus came to redeem. How beloved all of this is, despite the sin and the brokenness of which we are all aware!

I pray that God blesses all of you in your worship and in your sharing of love this Christmas. I pray also that God will renew us and equip us to continue God's missionary work for the redemption of the world. God bless,

Curtis E. Harms

TRUE MEANING OF CHRISTMAS.

Fairbanks, AK

A Christmas Cantata Special



And she shall bring forth a son,
and thou shalt call his name
JESUS: for he shall save his people
from their sins.
Matthew 1:21

Join us

for a "Christmas Service with Cantata"
Sunday 22 December 2013
at 11:15 AM.

First Korean Presbyterian Church
of Fairbanks, Alaska

A Celebration of Christmas

성탄 축하 찬송

By Donald Moore and Ruth Elaine Schram (현동혁 역)

Choir Leader: Elder Ungchun Chi

Conductor / Pianist: Grace Jeong

Drummer : Jimmy Garam Yi

Choir : First Korean Presbyterian Church of Fairbanks

Special Guest : Children of Sunday School



Note to Churches:

Our February Presbytery meeting is quickly approaching. Please remember to elect your Elder Commissioner as soon as possible. The sooner we know who is attending and

can make travel arrangements to Anchorage, the better the airfare prices. Thank you!



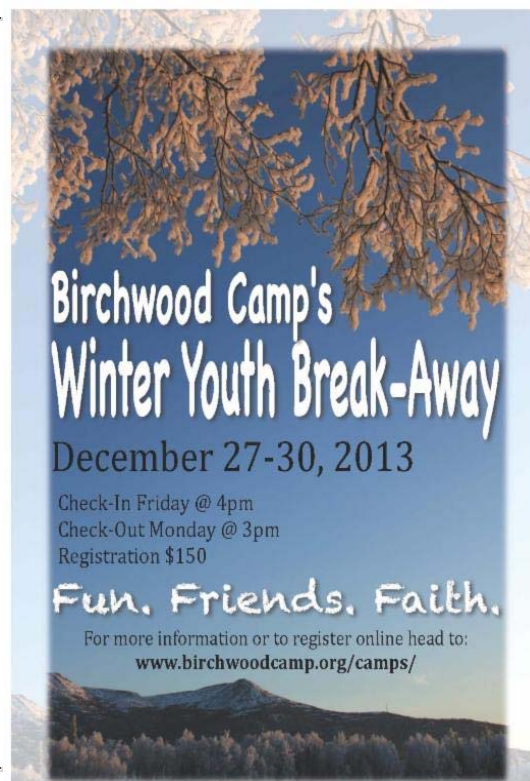
Sunday, December 15th was a great day worshipping with the Delta Junction Presbyterian/Faith Lutheran folks, as we commissioned Richard Mauer to serve as Lay Pastor for those churches. Leaders for the commissioning are shown in the photo.

From the left: Elder Anne Geise, Presbytery Executive Curt Karns, Richard Mauer, Chaplain, ELCA Bishop Shelley Wickstrom, COM co-moderator Mark Wartes

Birchwood Camp is hosting their annual **Winter Youth Break-Away camp** on **December 27-30, 2013!**

This is a wonderful event for middle school and high school youth in grades 6-12. All YOUTH from the Alaska PLUME family (Presbyterian, ELCA Lutheran, United Methodist, Episcopal churches) are invited to attend! The retreat program is inclusive and ecumenical and will be a time for enjoying worship and fellowship together as well as exploring fun Winter activities indoors and outdoors.

For more information or to register online, visit:
<http://birchwoodcamp.org/camps/>.



"In the end, love doesn't just keep thinking about it or planning for it.

Simply put:
Love does!"

PLUME Youth Mission Immersion

All youth grades 7-12 are invited to a Youth Mission Immersion on January 17-19, 2014 in Anchorage. Hosted by PLUME (Presbyterian, Lutheran, United Methodist & Episcopal) churches, youth will spend a weekend serving others in Anchorage. Visit www.plumeyouthAK.com for info, schedule, to register and pay online. Cost is \$35 which includes lodging, food and a T-shirt!

Simply put:
Love does!"

Bob Goff

For further information about the event, please contact
Danna Larson at dannalarson@firstpresanchorage.org.

Mark Your Calendars...

December 23rd-27th:

Presbytery office will be closed for the Christmas holiday

December 25th:

Christmas Day

December 27th-30th:

[Birchwood Camp's Winter Youth Break-Away](#)

For more information or to register online, click [here](#).

January 17th - 19th:

[PLUME Youth Mission Immersion](#)

Anchorage

For more information, please visit: www.plumeyouthAK.com

February 28th - March 1st, 2014:

Next Presbytery Meeting - First Presbyterian Church of Wasilla

March 21st-24th, 2014:

[Ecumenical Advocacy Days](#)

Washington D.C.

Click [here](#) to visit the website for more information.

Quick Links

[Presbytery of Yukon](#) | [Synod of Alaska- Northwest](#) | [PC\(USA\)](#)
[Presbyterians for Earth Care](#) | [Presbyterian Foundation](#)



Try it FREE today.

This email was sent to office@pbyukon.org by office@pbyukon.org |
[Update Profile/Email Address](#) | Instant removal with [SafeUnsubscribe™](#) | [Privacy Policy](#).

Presbytery of Yukon | 616 W. 10th Avenue | Anchorage | AK | 99501